



- NEWLY RENOVATED PENTHOUSE APARTMENT
- SEA VIEWS
- 2 BEDROOMS
- MODERN INTERIOR
- OPEN PLAN
- HIGH QUALITY FINISH

A beautifully restored heritage building, reimagined for today.

Apartment 3, The Penthouse 1
Wilton Road, Hornsea, HU18
1QU

Asking Price
£159,950

2 BEDROOMS

1 BATHROOMS

1 RECEPTION ROOMS

Apartment

Wilton Road, Hornsea

Open spaces, natural light, and views that never get old!



LAST ONE REMAINING!! – ** EXCEPTIONAL NEWLY RENOVATED PENTHOUSE APARTMENT WITH SEA VIEWS **

Set within an elegant period building in a highly sought-after location, this beautifully renovated two-bedroom penthouse apartment offers refined coastal living with attractive sea views.

Finished to an exceptional standard throughout, the property seamlessly blends timeless architectural charm with contemporary design. The spacious open-plan living area has been carefully crafted to maximise light and flow, featuring a bespoke, high-specification kitchen and premium finishes that create a stylish yet practical living space.

The comprehensive renovation has been carried out in full compliance with stringent building regulations, including enhanced soundproofing for optimal comfort and privacy. As part of the works, the developer has installed new electrical heating throughout, undertaken a full re-wire, added insulation, and fitted a new kitchen with integrated appliances and bathroom, as well as being fully plastered and neutrally decorated throughout with modern doors and high quality flooring. The result is a home that offers the feel and reliability of a brand-new property, while retaining the character and elegance of a period building.

Both bedrooms are immaculately presented, offering a calm and comfortable retreat with a high-quality finish.

Perfectly positioned just a short stroll from the seafront and the vibrant town centre, the apartment enjoys an excellent location that places the very best of coastal living right on your doorstep.

With Hornsea continuing to grow in popularity as a holiday destination, this property also represents an outstanding investment opportunity. The current vendor, an experienced local holiday-let operator, has provided projected income figures, available upon request through the agents.

EPC - D
Council Tax - A
Tenure - Leasehold

Wilton Road, Hornsea



Open Plan Living/Kitchen
(virtually staged)

A charming dormer window to the front of the property provides delightful sea views and a cosy window seat, creating the perfect spot to relax and take in the coastal outlook. Two Velux windows to the front and an additional rear window flood this stunning open-plan space with natural light, enhancing the bright and airy atmosphere throughout.

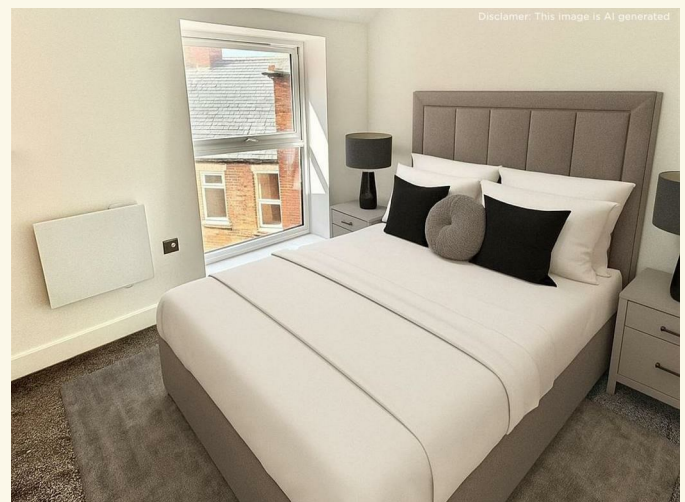
The beautifully appointed kitchen has been finished to a high standard and features quality fitted base units, elegant Quartz work surfaces, a one-and-a-half bowl sink with drainer, built-in double oven and hob, integrated under-counter fridge and freezer, integrated washing machine and dishwasher, and an extractor fan. High-quality vinyl flooring, two electric radiators, and contemporary spotlights complete this exceptional living space.



Bedroom 1
(virtually staged)
3.07 x 2.58

Window to rear of property, electric radiator, carpeted.

Bedroom 2
(virtually staged)
2.63 x 2.63 (max)
Window to rear of property, electric radiator, carpeted.



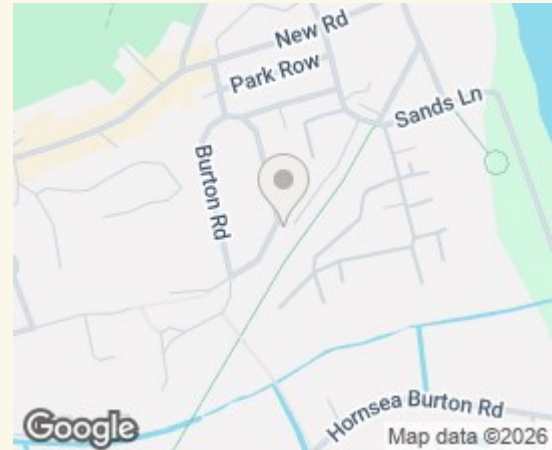
Wilton Road, Hornsea



Bathroom

The luxurious bathroom has been thoughtfully designed to create a stylish and relaxing retreat, featuring a contemporary W.C., an elegant hand wash basin set within a sleek vanity unit, and a panelled bath with a shower over. Beautifully tiled walls add a touch of sophistication, while high-quality vinyl flooring, a heated towel rail, and an extractor fan complete this beautifully finished space.

Energy Efficiency Rating		
	Current	Potential
<i>Very energy efficient - lower running costs</i>		
(92 plus) A		
(81-91) B		
(69-80) C		
(55-68) D	61	61
(39-54) E		
(21-38) F		
(1-20) G		
<i>Not energy efficient - higher running costs</i>		
England & Wales	EU Directive 2002/91/EC	



Approx Gross Internal Area
60 sq m / 651 sq ft



Floorplan

This floorplan is only for illustrative purposes and is not to scale. Measurements of rooms, doors, windows, and any items are approximate and no responsibility is taken for any error, omission or mis-statement. Icons of items such as bathroom suites are representations only and may not look like the real items. Made with Made Snappy 360.

Arrange a viewing

PHONE - 01964 532121

EMAIL - office@ourhouseestateagents.co.uk

OFFICE - 20 Newbegin, Hornsea, HU18 1AG

WEB - ourhouseestateagents.co.uk